



Liubov Salagaeva

Fashion Design Portfolio



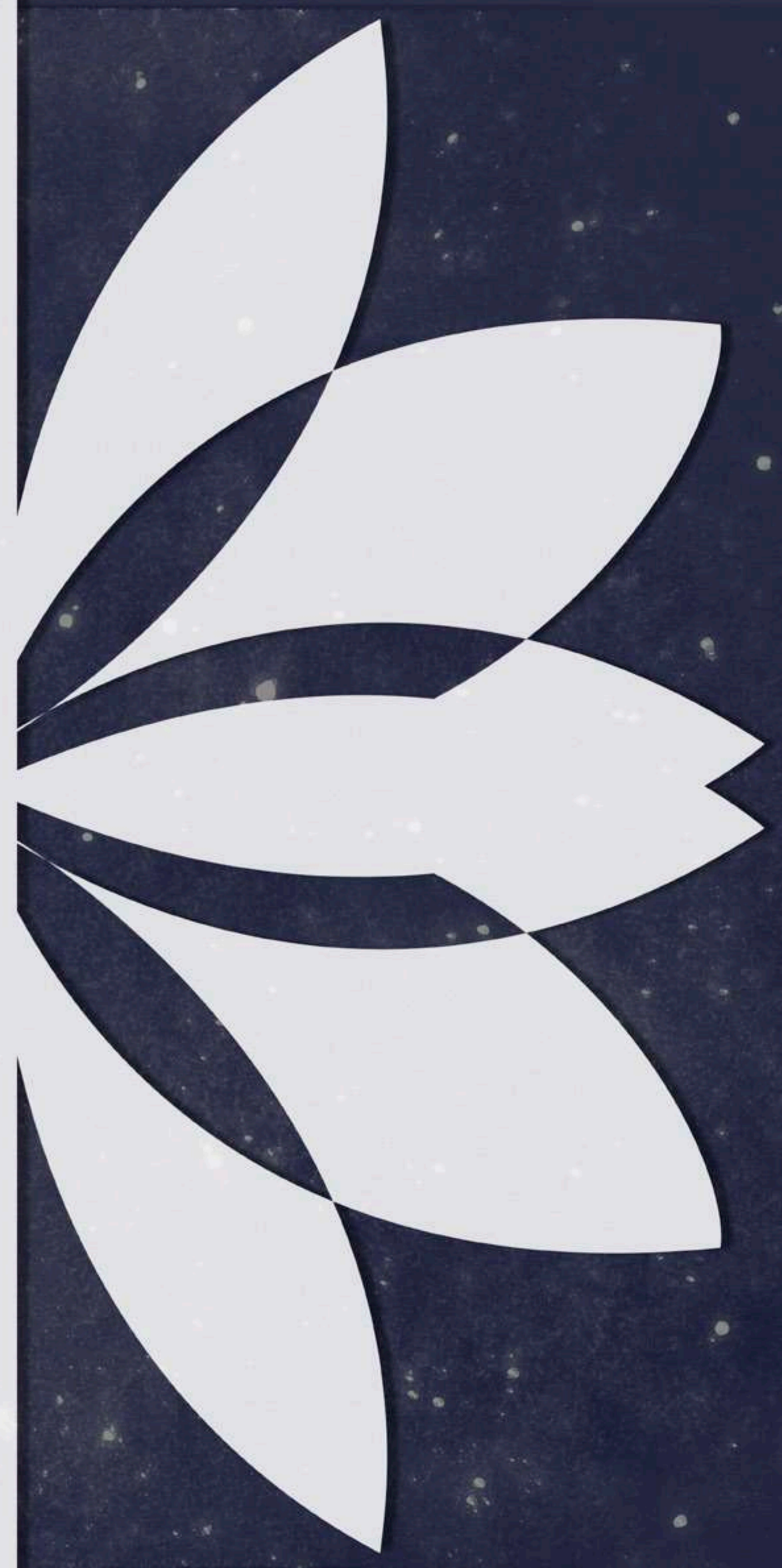
LOTUS ROMANCHE

SS2019 Collection

There are two types of lotuses in the world: the pink lotus that lives in Asia and the yellow one, from America.

I've been thrilled with the idea of juxtaposing clean lines and elegance of the lotus – typically associated with East, – and american indians culture and lifestyle – that is associated with West.

Mysticism and spirituality – related to amerindians, asian culture, and me, – became a glue of this creative process.





LOTUS COMANCHE

Collection S/S19



MIND MAP 2

- ①
- SILHOUETTE
 - PROPORTION
 - DETAILS
 - LINEWORK
 - COLOUR
 - FABRIC
 - PRINT/SURF. Dec.
 - HISTORY
 - FUNCTION
 - CONTEMP.
 - MARKET.

Context → USA

Maybe, it is not really about the details, but what is important about my designs is that SHAPE/FABRIC/LINES

must be royal.

Because lotus in USA is just a potato, and the potato has nothing to my life (though, I am a potato....)

Style Formula:

- 1) Colours → juicy, contrast → Dramatic
- 2) Silhouette/Proportion/Details/Line work → Serious +
Still bad in differentiating all this, but these are instruments of expressing luxury → Dramatic
- 3) Folds → thick, smooth, ~~waxy~~ "juicy" (don't know the right word :))
- 4) Patterns → I would use fragments of a lotus to create a pattern, so it is more like lines & Geometry → Dramatic

Dominant Subdominant Subordinate Concept.



- FABRIC
- Luxury
 - Durable
 - Smooth
 - Thick
 - Folds softly.
 - Cooling
 - Matte



WHERE?

- Full sun.
- 1-4 deep.
- only wetlands
- native Illinois
- Massachusetts
- Maine
- Connecticut
- Caribbean Shores

WHAT?

The flower is radially symmetrical.

- One flower
- Up to 10 inches
- 20+ sepals & petals
- pollen collected by bees
- nut-like
- 0.4 inches in diameter

closed at night

WHO?

Fully Consumed by Amerindians.

- Comanche
- Dakota
- Hu-ron
- Meskwaki
- Ojibwa
- Omaha
- Potawatomi
- Sauces: E Dakotas, C Minnesota, N Iowa
- Yankton: Up Missouri River
- Stonew: Montana
- N Lake Ontario, Kansas, Michigan, Oklahoma
- other visitors:
 - flower flies (Syrphidae)
 - shore flies (Ephydriidae)
 - misc. beetles
 - caterpillars
 - 1) Bellura obliqua
 - 2) Ostrinia nana

To SUM UP:

In one hand, lotus is very luxury flower: thick, waxy, dirt- & water-proof

On the other hand, if I choose it in context of America, it is like.....

I like american indians culture. Shall I use it as a background to its Majesty the Lotus? ← CONTEXT? ...HOW???

just a wild potato... → shiny treasure

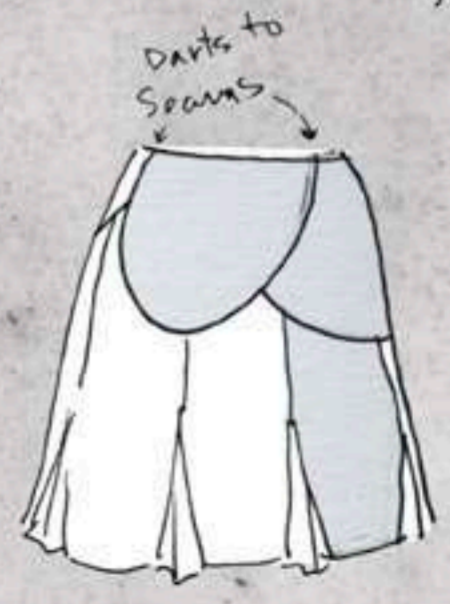
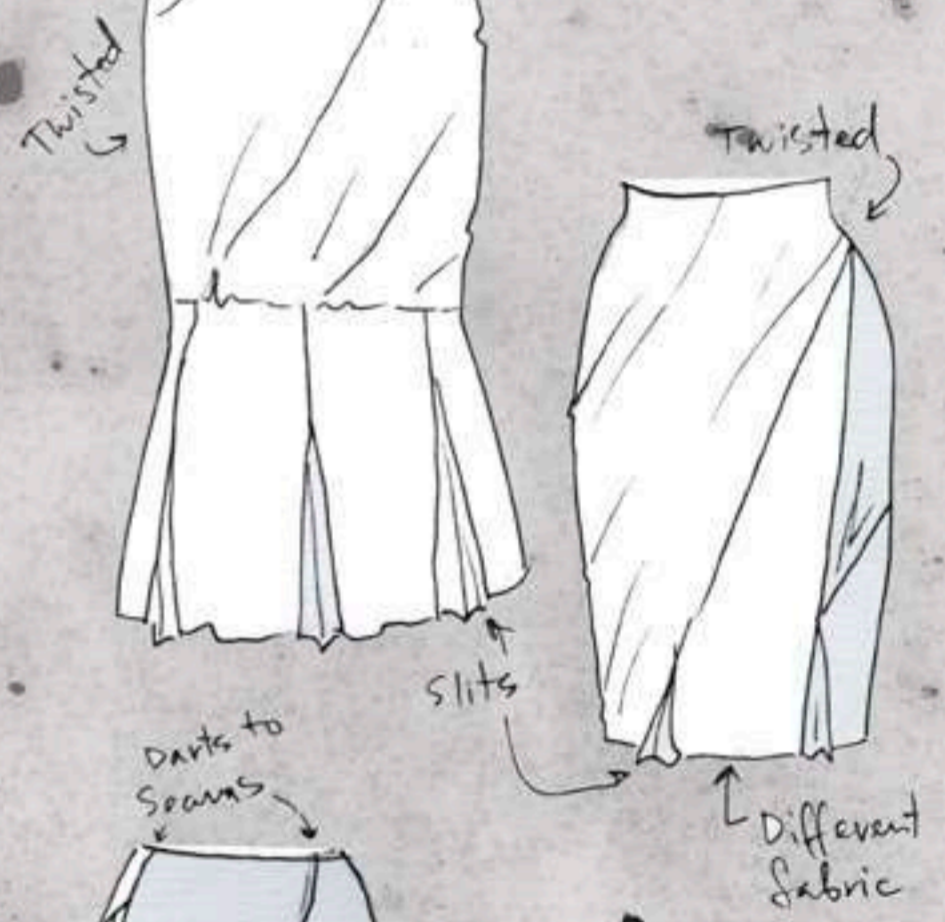
↑ OBJECT?

HOW?

②



it looks more lotus-like without a waistband.



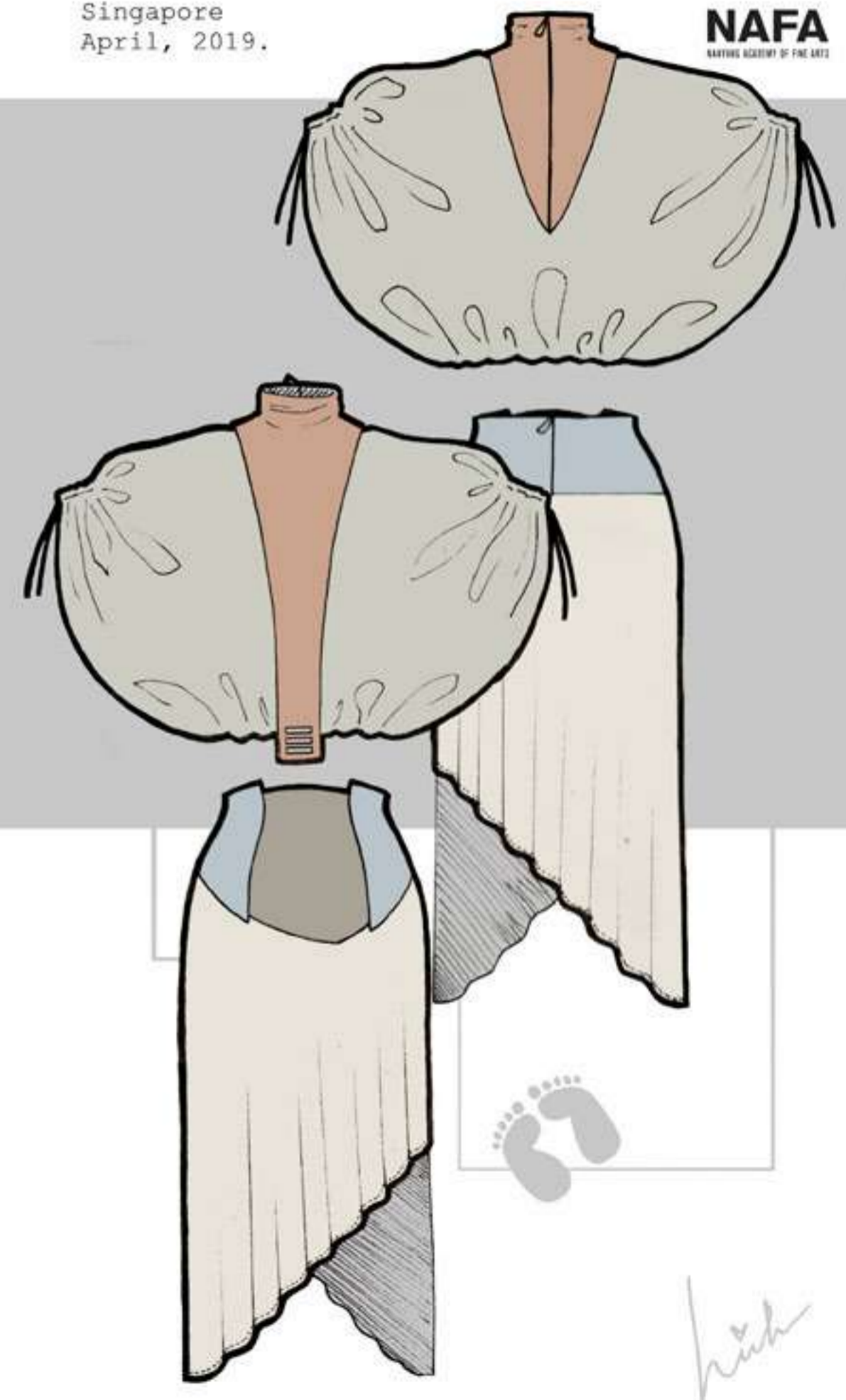
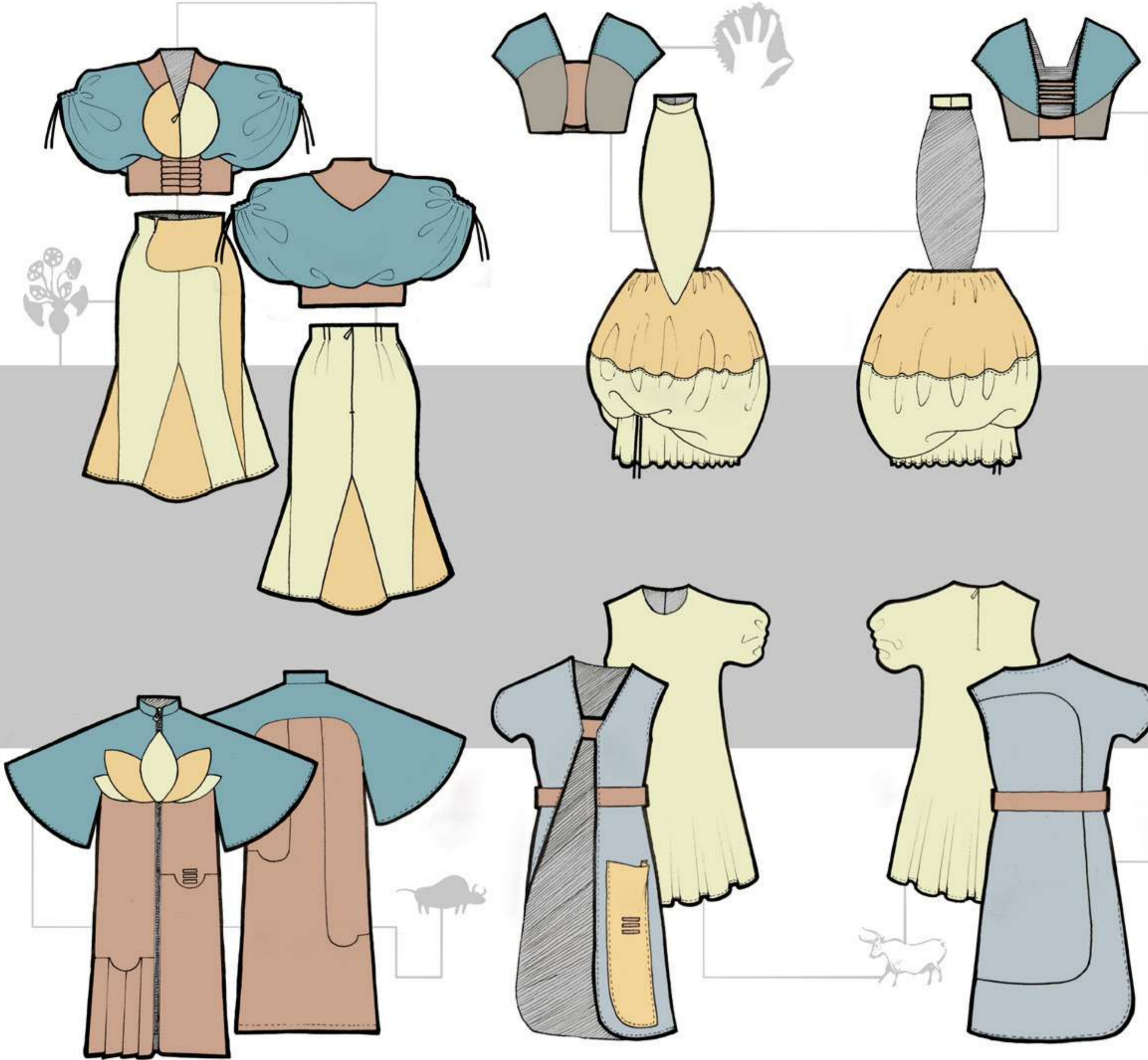
COLLECTION S/S 2019 Lotus Comanche is a story we found behind each person - the only land that remains uncovered for all. The land that can be reached and explored. But explored eternally. In a way it used to be in childhood, when you came to the same place everyday without a doubt you've never been here before.

Lotus Comanche as a collection represents a strong character with the brave to expose its personality; with the curiosity to explore and an empathy to accept and cooperate.

It is made for creative and adventurous people with a spirit of a seeker. Comfortable to wear in Spring/Summer of a temperate climate. Loose tops and waist-fitted silhouettes give an equal freedom to be wild and still flatter the urban environment.

Singapore
April, 2019.

NAFA
NATIVE ARTIST OF THE YEAR



LOTUS COMANCHE

LOTUS COMANCHE





IFUGAO

SS2020 Collection

My goal was to dip in and explore the root of filipino story; bringing up to the surface its essence integrated together with the evolutionary process. I employed the vision of five contemporary artists - Rodel Tapaya, Buen Calubayan, Jigger Cruz, Louie Cordero and Zen Cabangis, - to build a personality of modern Philippines and express it in my collection.

FUGAOCALL

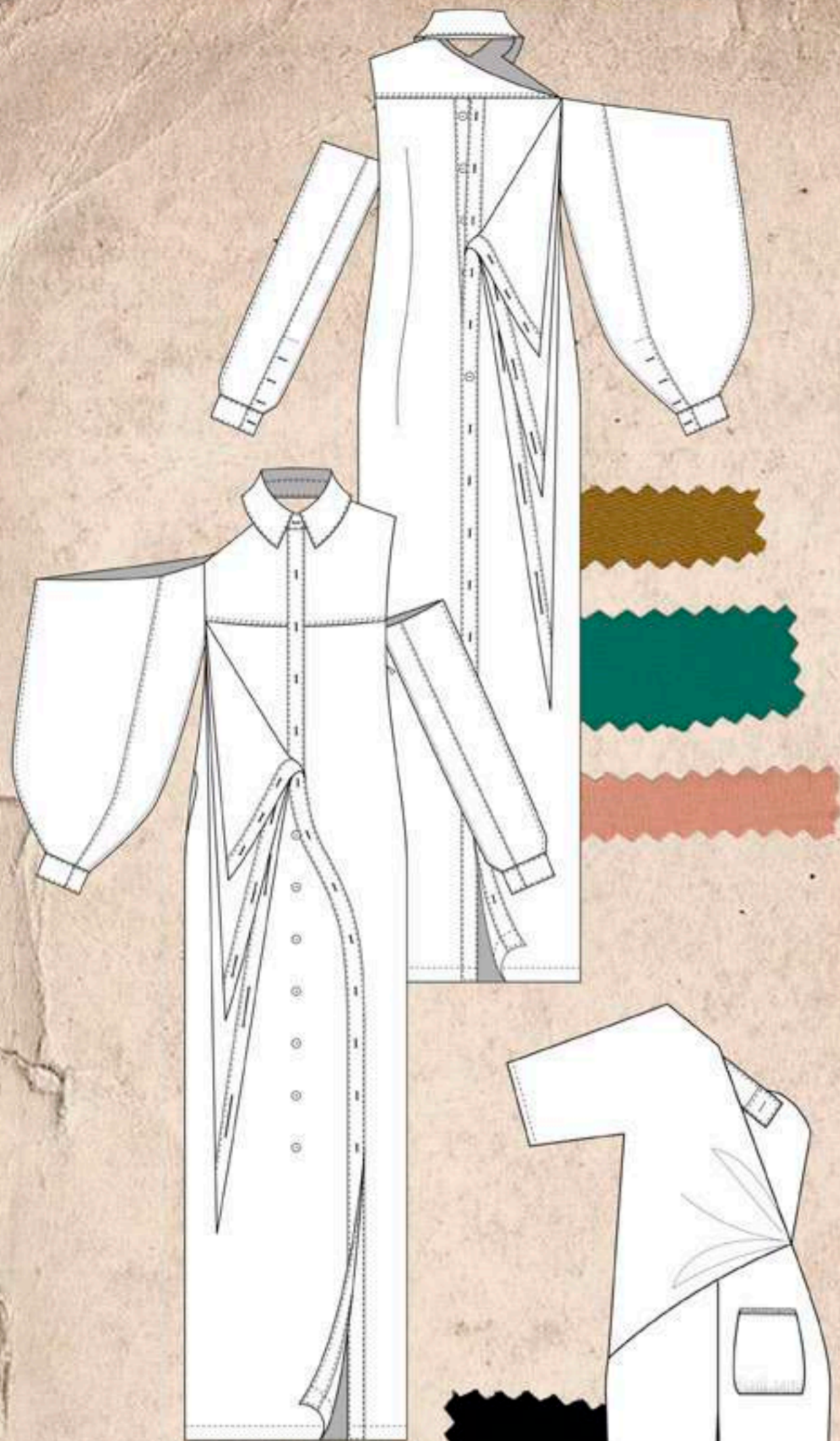




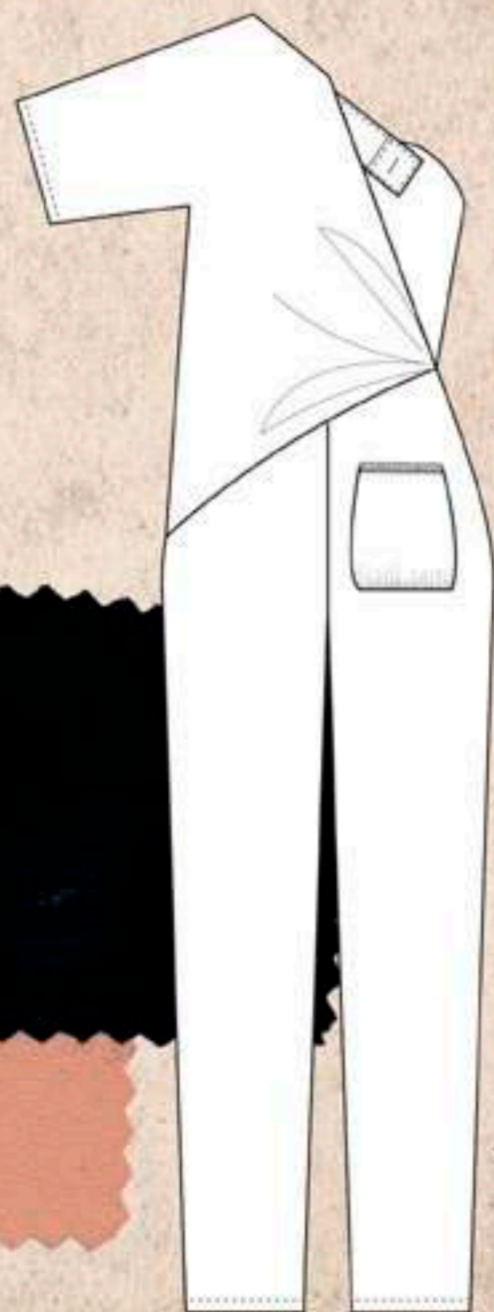


This reminds me a plastic bag with garbage! Very relevant.

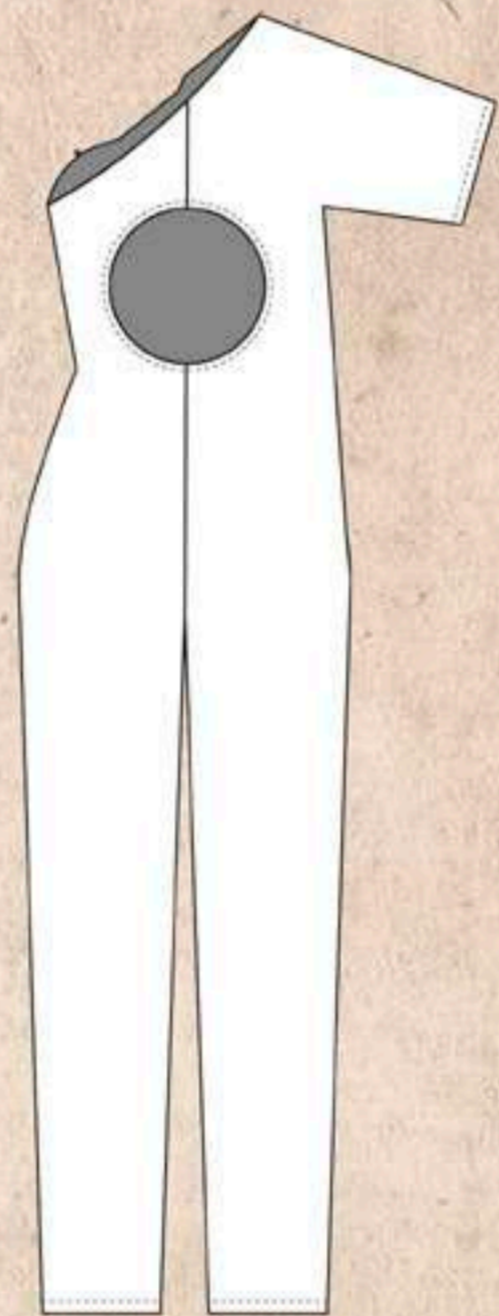




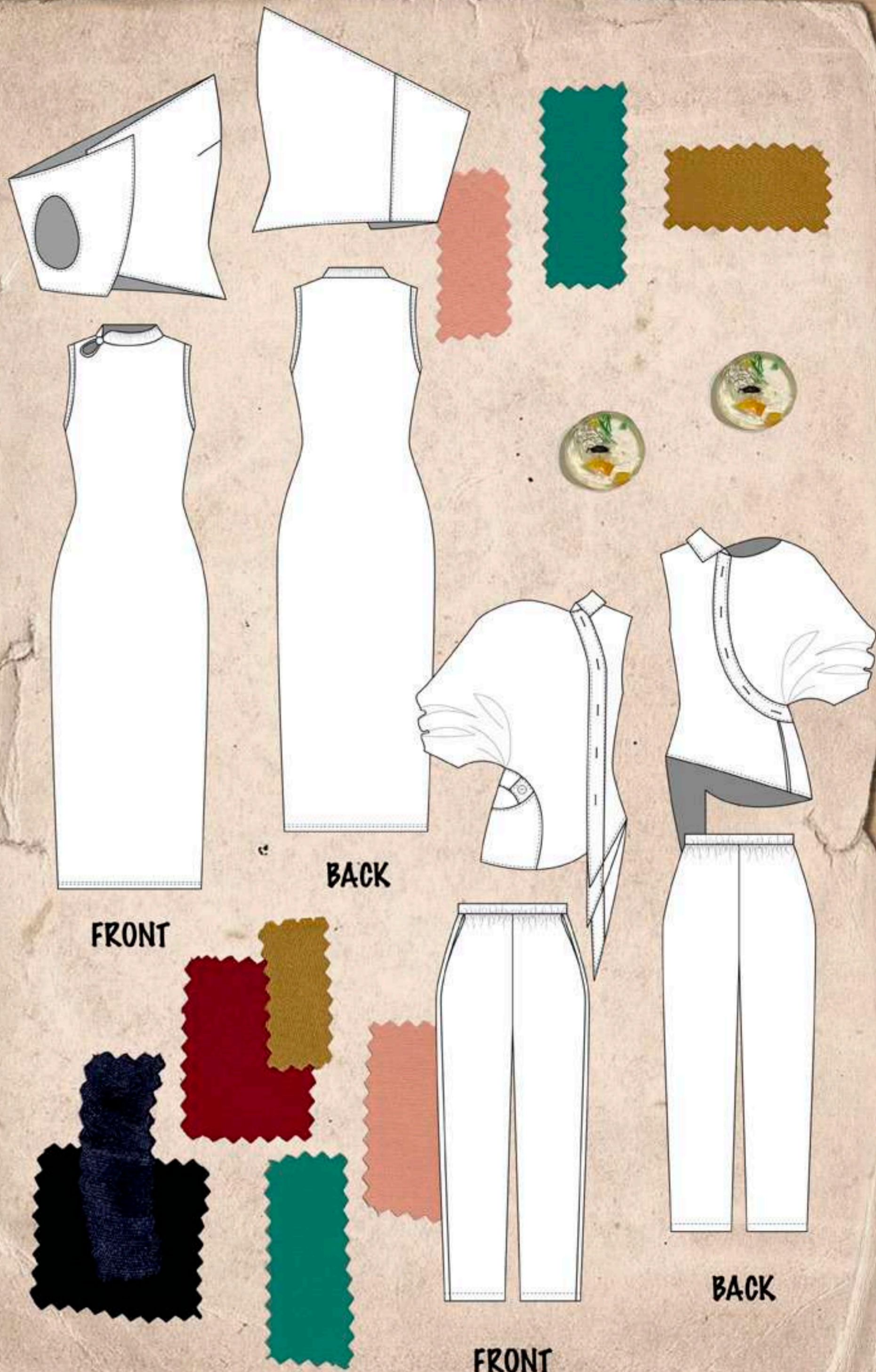
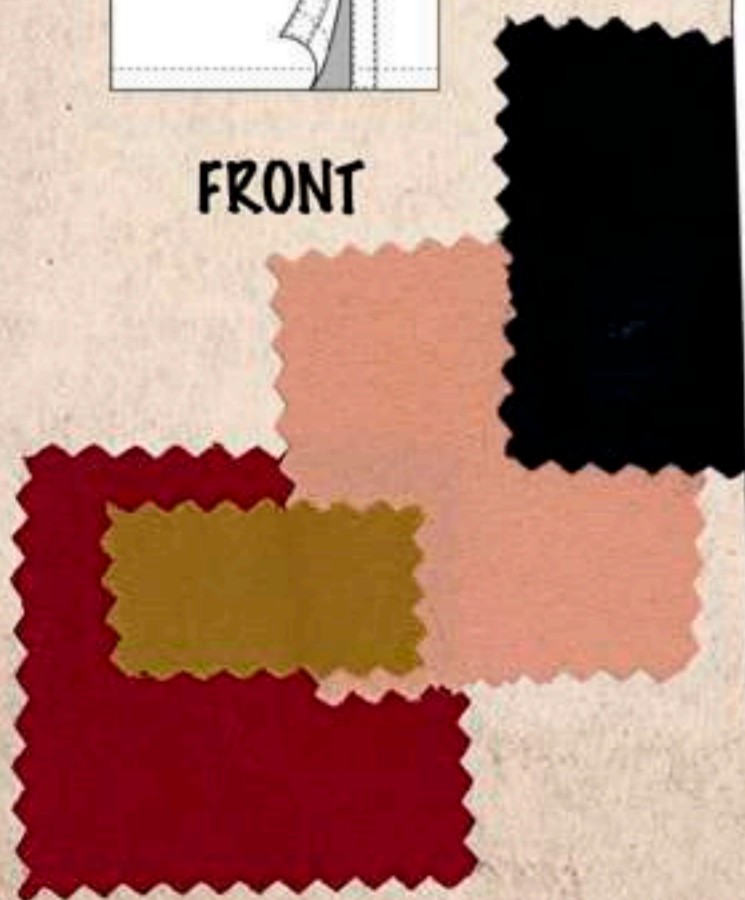
FRONT



FRONT

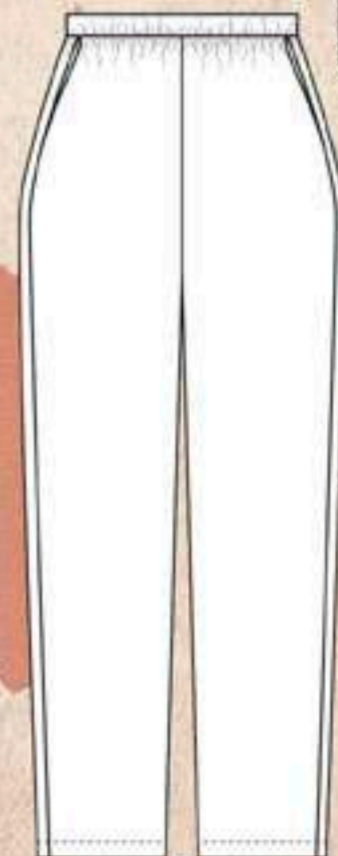


BACK

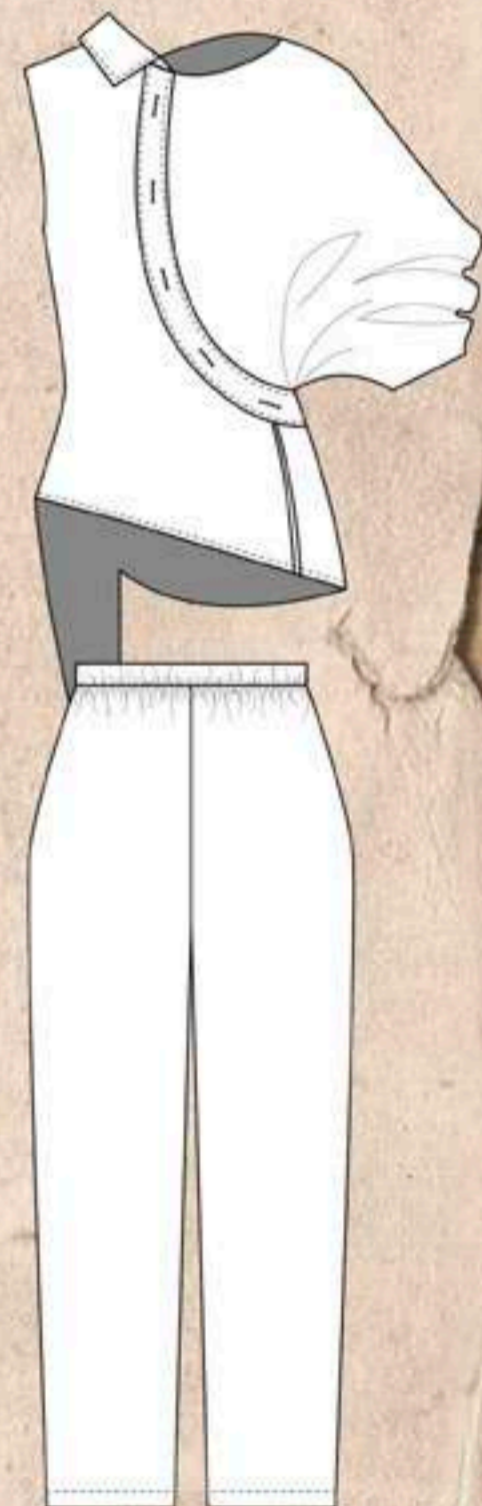


FRONT

BACK



FRONT



BACK





STATEMENT OF INTENT

The IFUGAO | SS 2020 Collection represents Philippines in its recent art and far-distant heritage – ifugao («earth people») tribal wisdom.

Civilisations survives through dramatic changes only. I feel related to the painful process of leaving heritage behind, replacing it with something new and artificial. But no matter how different the leaf is, it is still fed by veins that brings water from underground: our heritage lays deep in cells and still defines us, who we are.

The IFUGAO | SS 2020 Collection is designed to express wisdom of the past and controversial reality of today world. Spiced with irony and satire – brought by artists eyes, that helps us to evolve with changes.

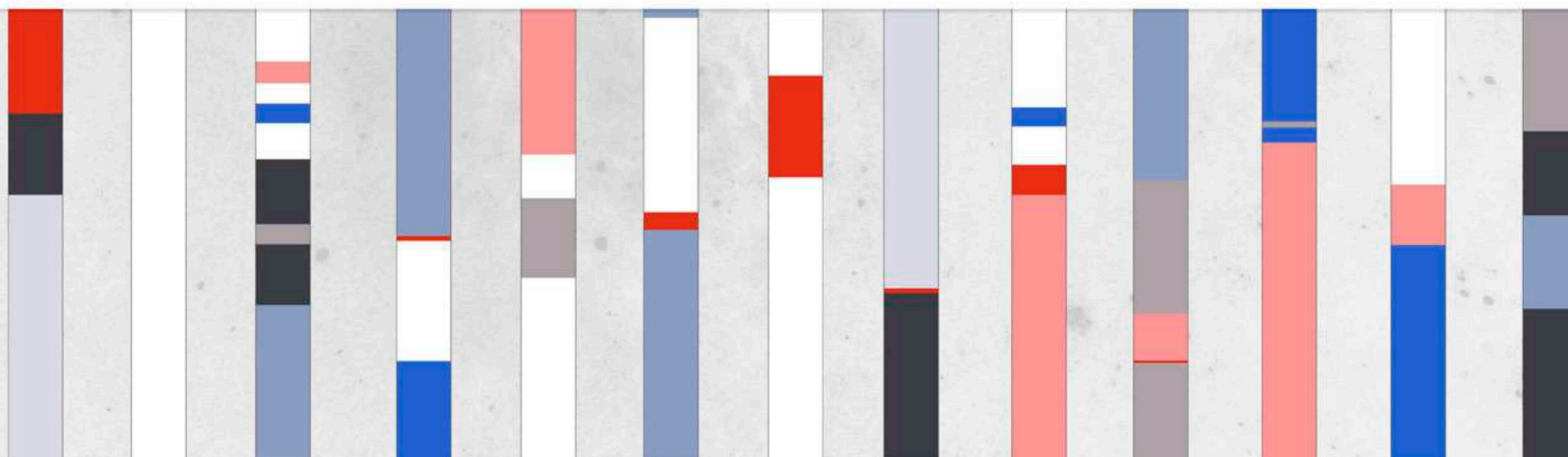
It suits spring and summer of a temperate climate. The variety of color options and modest hem line gives an opportunity to build a 20-99 age suitable outfit.

For those who seeks; for those who hears – the ifugao call...

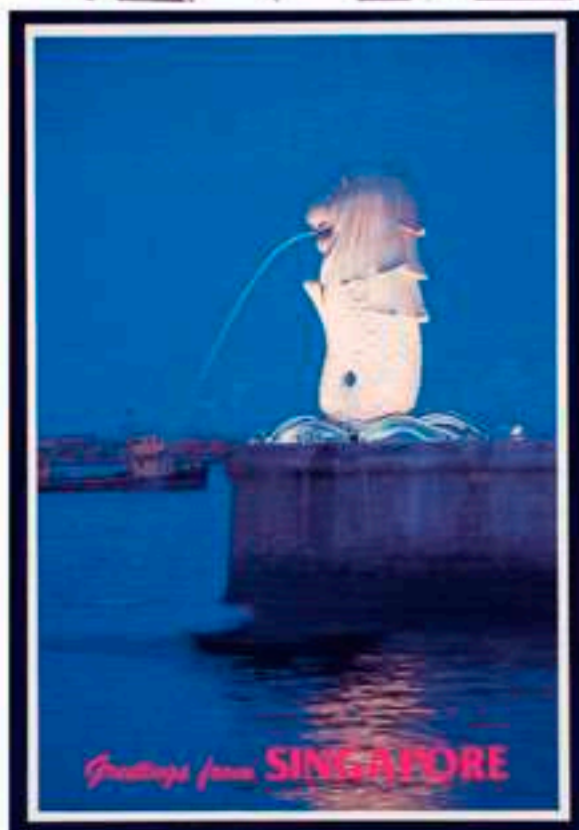
Heritage

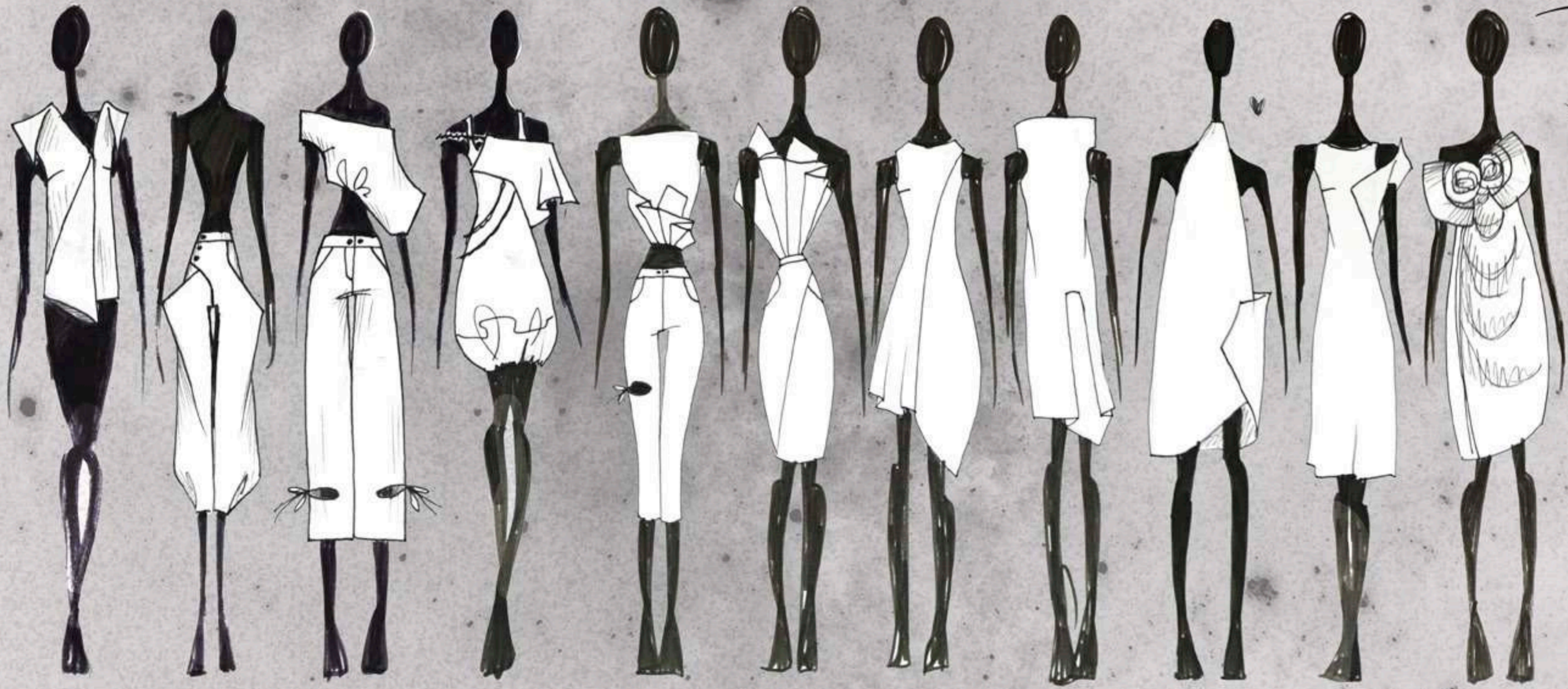
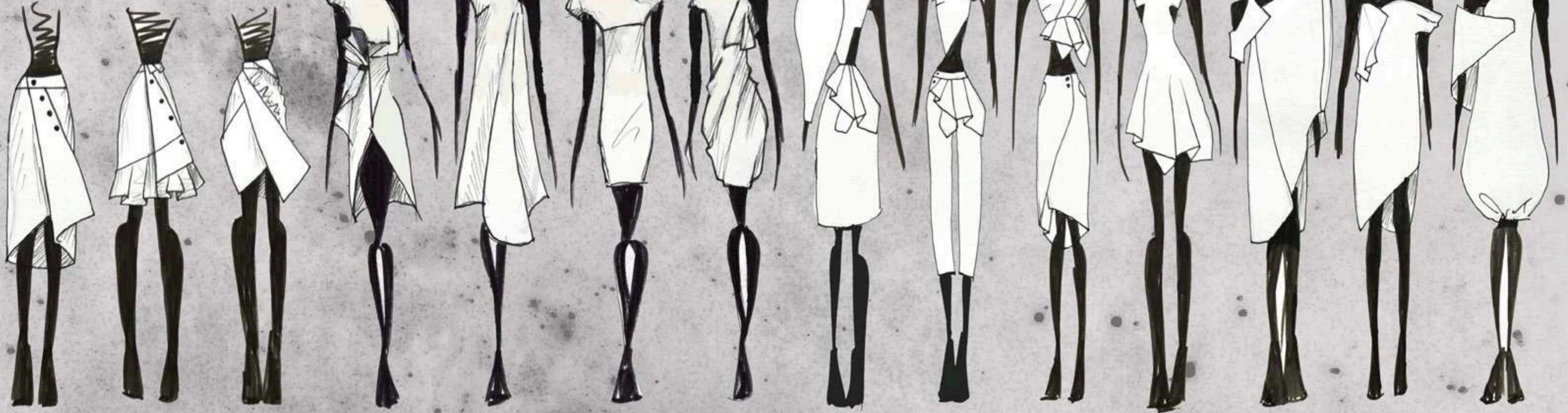
SS 2021 Collection

I aimed to explore local habitat diving into tangled, but well structured narrative of the Singapore story. It seemed to me tangled in terms of how many things and people were raised and nurtured on that land; how complicated was the path before the glory was ignited. But at the same time, this thorough weaving of faith was then rolled out like a plain carpet where everything was set in a clean and simple ornament.



HERITAGE

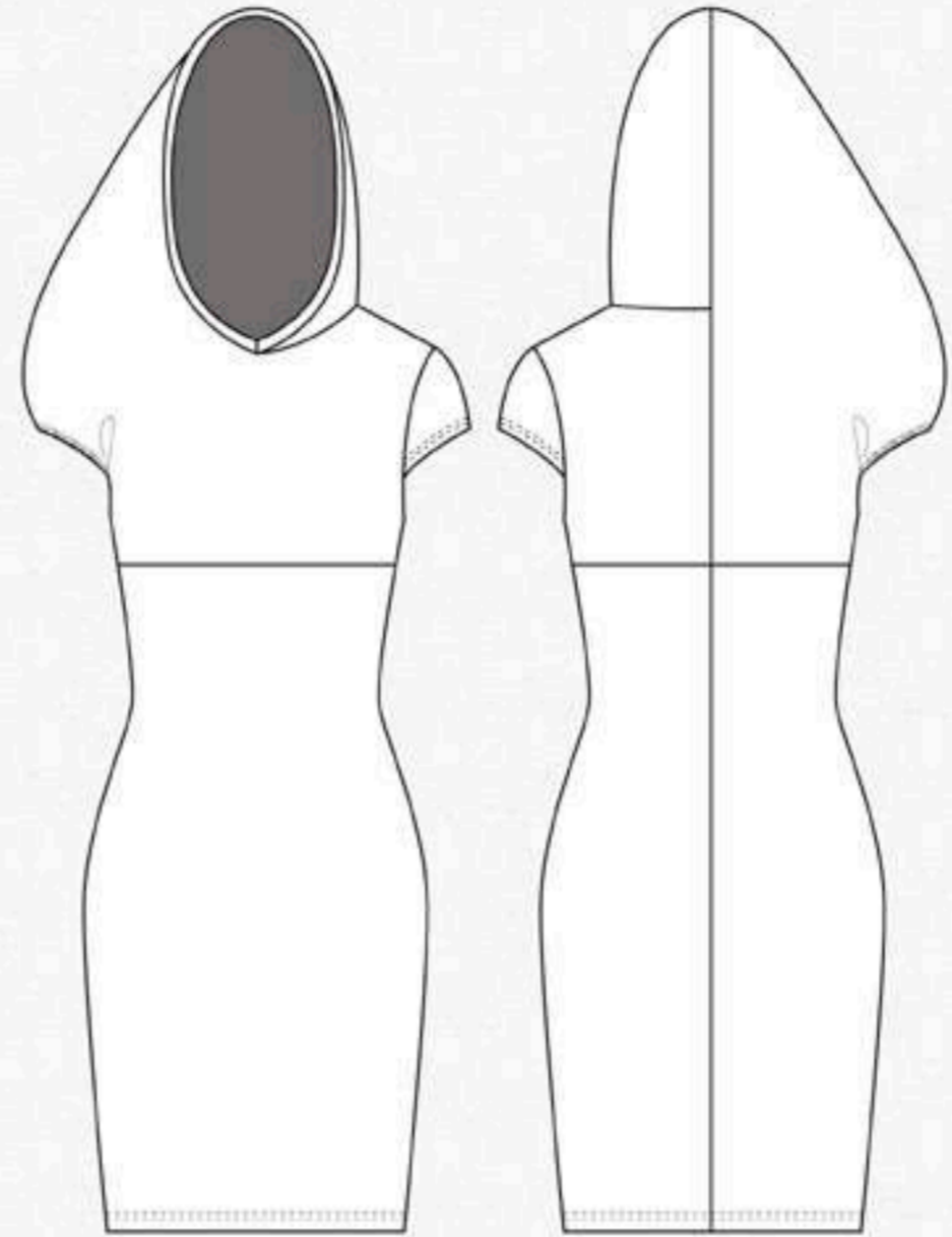






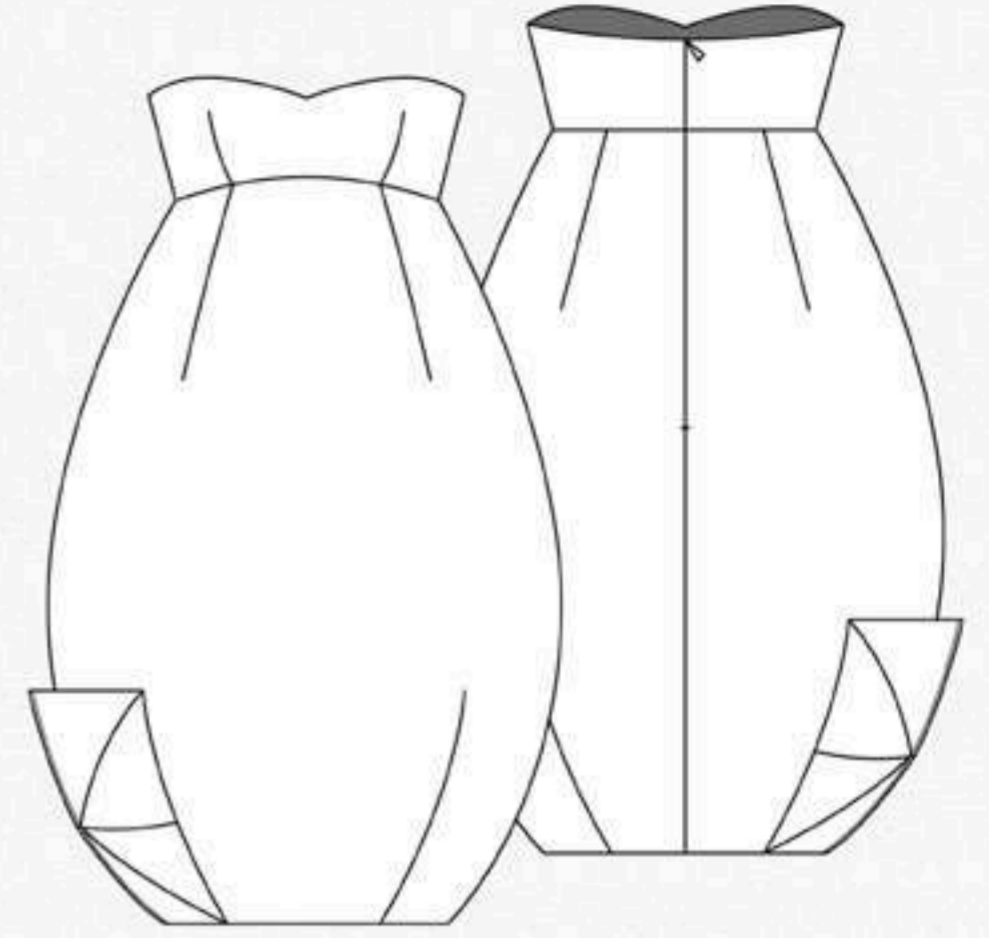
FRONT

BACK



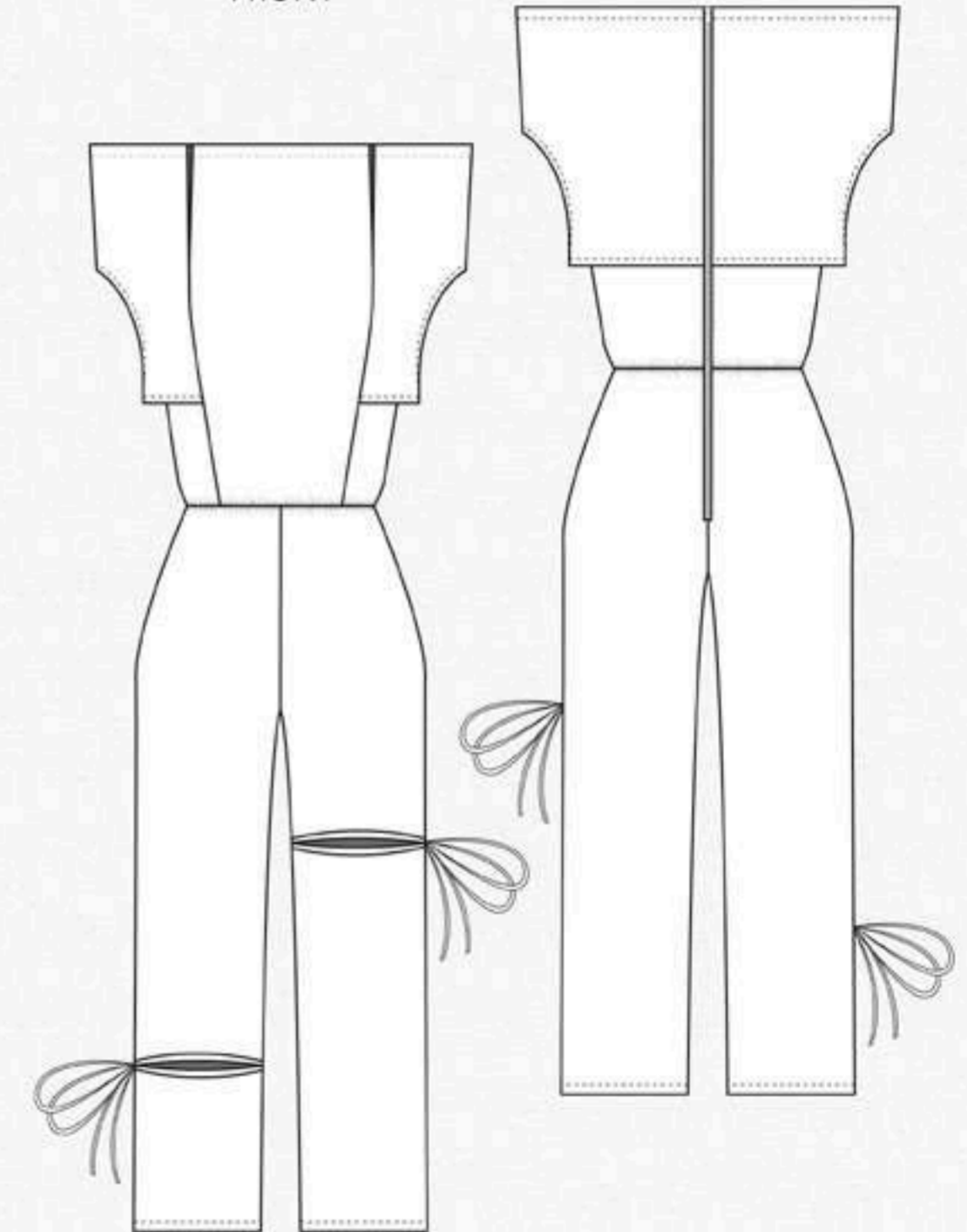
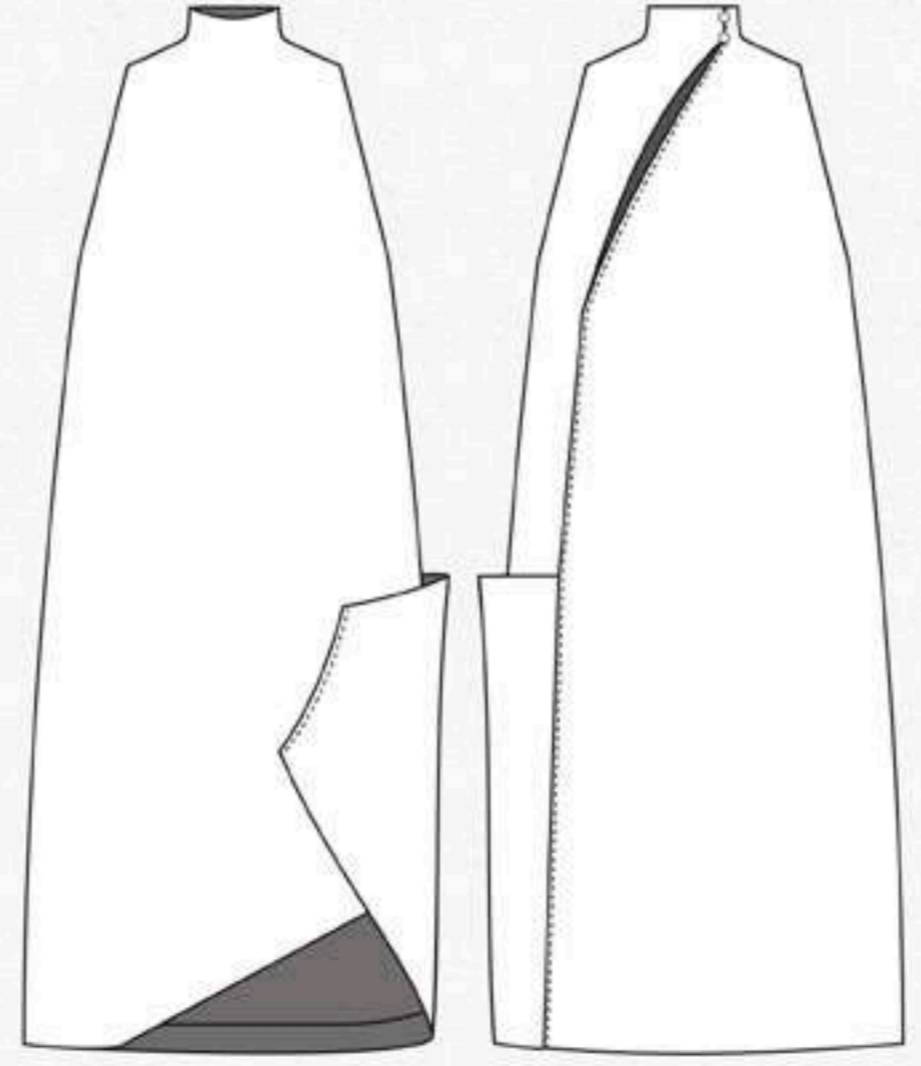
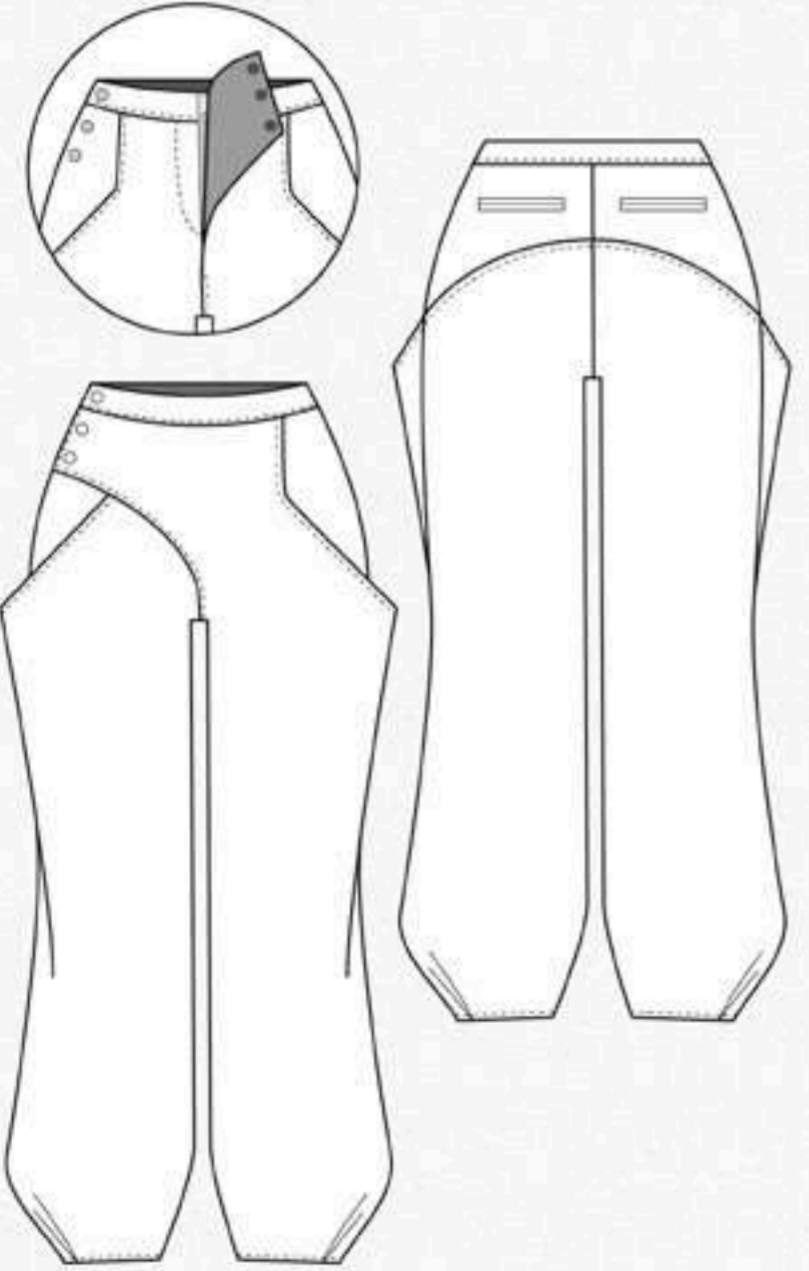
FRONT

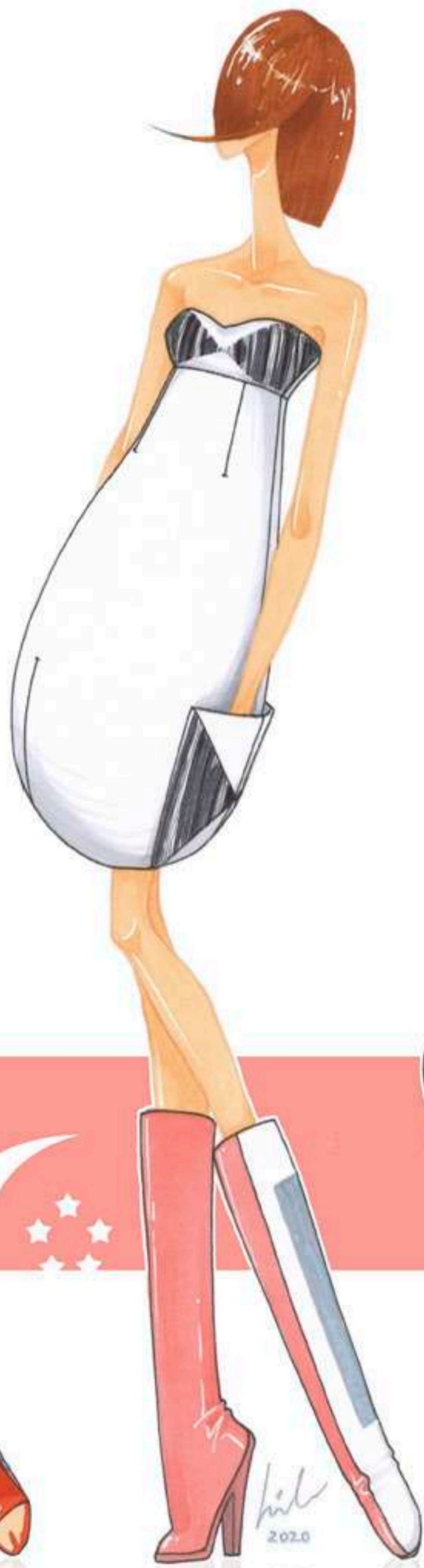
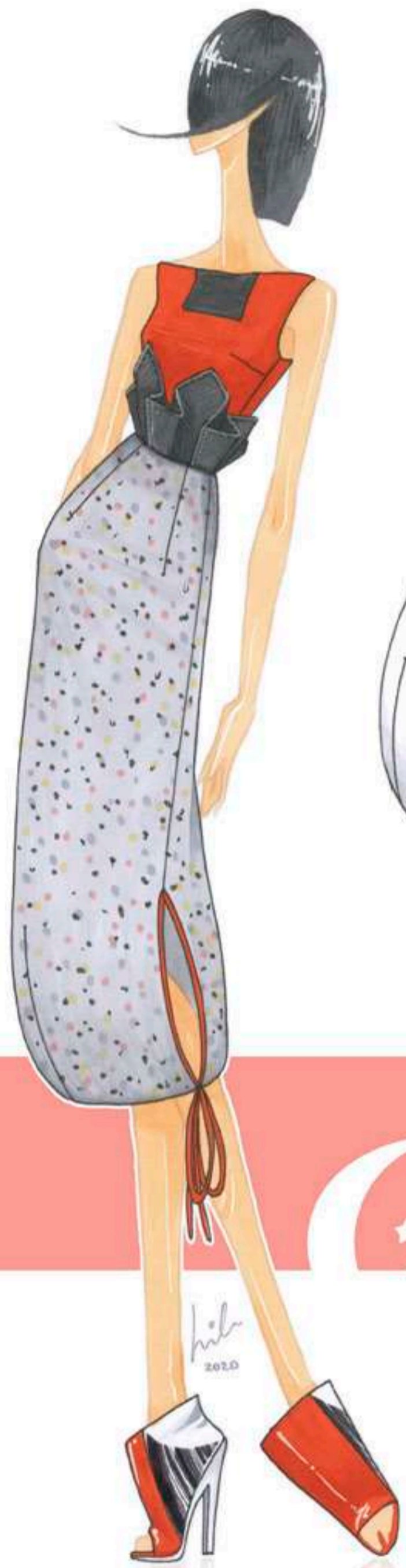
BACK



FRONT

BACK







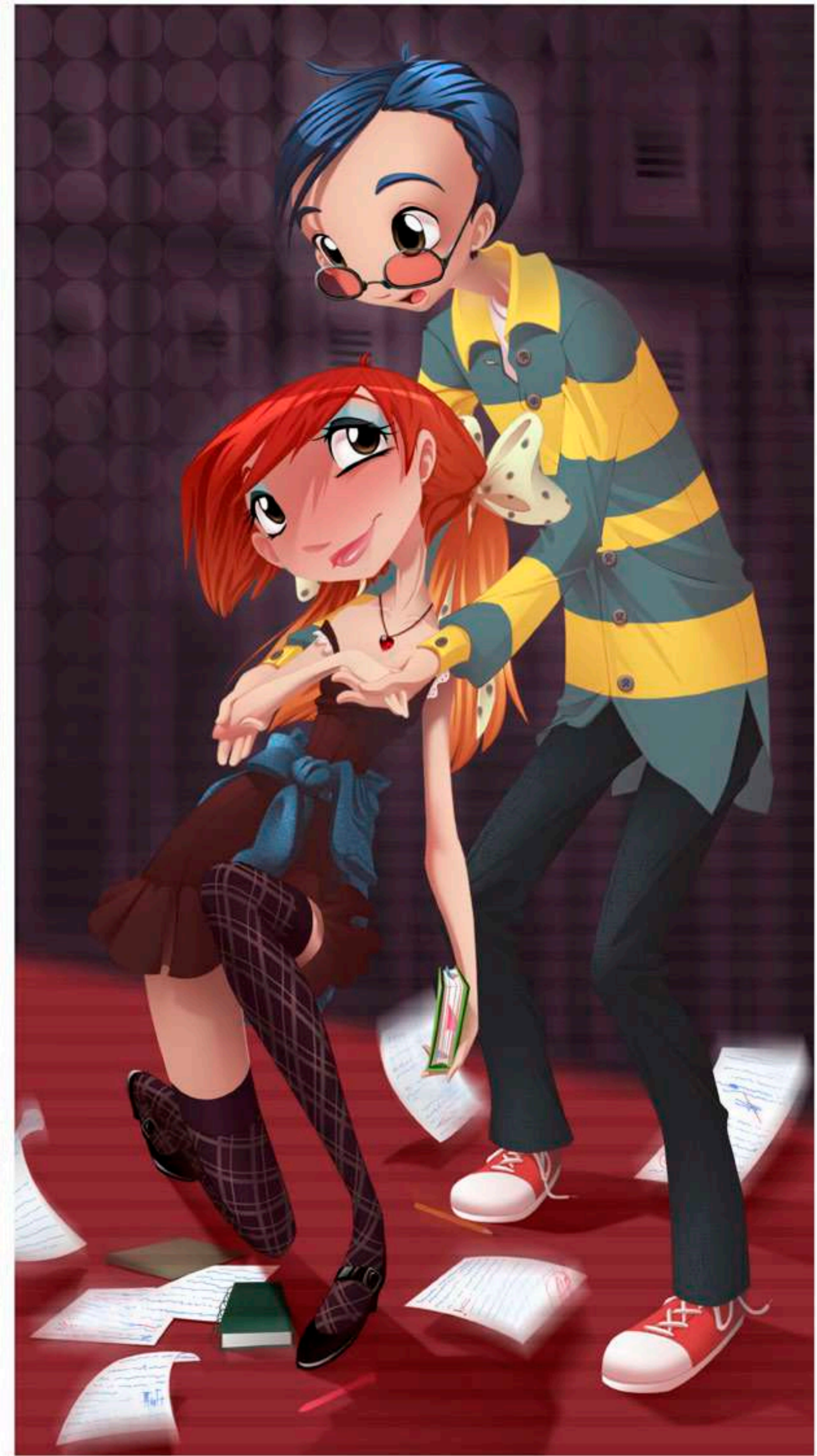


Digital Illustration

Adobe Illustrator | Photoshop

ASTROLOGICAL SIGNS

Galactic Weirdos





Liebs

